



ST NICHOLAS COLLEGE
HALF-YEARLY PRIMARY EXAMINATIONS
February 2017

Year 6

English Listening Comprehension

TIME: 30 minutes

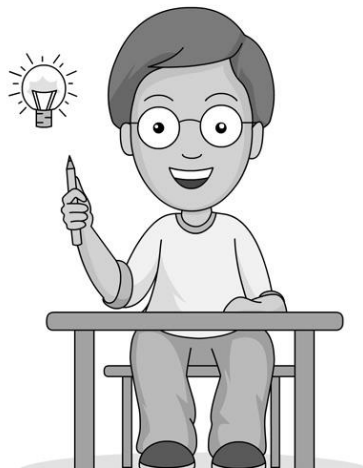
Student's Paper

Total Marks

20

Name: _____

Class: _____



TASK 1

Exercise 1 Fill in each blank with a word.

(4 marks)

a)	Ocean Ramsey is a _____ and a conservationist.
b)	She dives straight in with endangered and potentially dangerous _____ in the hope of encouraging greater conservation.
c)	She is a professional scuba diver and she _____ in free diving.
d)	She trains new divers to _____ and appreciate sharks.

Exercise 2 Tick (✓) the correct box in the table below. TRUE, FALSE or No Information Given (NIG).

(4 marks)

	True	False	NIG
a) "Water Inspired" is the name of Ocean's conservation group.			
b) Millions have viewed her extraordinary YouTube videos.			
c) The clips show this tall redhead taking a ride on the back of a Great White.			
d) Ocean's videos, published online, are recorded by her mother.			

TASK 2

Exercise 1 Fill in with one word to complete each sentence. (4 marks)

a)	Environmentalists monitored that part of the _____ day and night.
b)	Officials said that the _____ that lashed the islands over the weekend could mean an early hatching.
c)	The fragile eggs could drown by the _____.
d)	Sixty-six turtles hatched in pitch _____ and made their way to the sea.

Exercise 2 Tick (✓) the best phrase. (4 marks)

1.	The eggs hatched after	
a)	thirty-six days of incubation.	
b)	fifty-six days of incubation.	
c)	twenty-six days of incubation.	

2.	Movement from the hatchlings was detected at about	
a)	four in the morning.	
b)	eleven in the evening.	
c)	two in the morning.	

3.	To guide the young turtles to sea environmentalists used	
a)	fire torches.	
b)	special infrared lights.	
c)	coloured floodlights.	

4.	At ten minutes past four in the morning	
a)	the hatching episode was over.	
b)	a last hatchling emerged and made its way to the sea.	
c)	the police closed off the area and nobody was allowed near.	

Exercise 3 Tick (✓) the correct box in the table below. TRUE, FALSE or No Information Given (NIG). (4 marks)

	True	False	NIG
a) The event was monitored by officials from Nature Trust and the Environment Authority.			
b) In 2012, a loggerhead turtle laid eggs at Golden Bay.			
c) Loggerhead turtles tend to eat jelly fish and squids.			
d) To capture or kill turtles is prohibited by law.			

End of Paper